



**STATE OF IOWA
FLOOD MITIGATION PROGRAM
PROGRESS REPORT**

PERIOD COVERED BY THIS REPORT: 5/1/2022 to 10/31/2022
 LOCAL CONTACT NAME: Calvin Miller
 GOVERNMENTAL ENTITY: City of Des Moines & DMWRA
 ADDRESS: 400 Robert D. Ray Drive
 Des Moines, IA 50309
 TELEPHONE NUMBER: 515-283-4748
 PROJECT TITLE: Des Moines-WRA Flood Mitigation Project
 AGREEMENT NUMBER: 2015-1
 ACTIVITY COMPLETION TIMEFRAME: 12/4/2013 to 12/31/2033

	FEDERAL	LOCAL	STATE (STIF only)	TOTAL
TOTAL FUNDS APPROVED:	\$ 130,270,434	\$ 67,239,013	\$ 111,100,273	\$ 308,609,720
TOTAL FUNDS EXPENDED TO DATE:	\$ 129,497,817	\$ 78,115,957	\$ 60,485,670	\$ 268,099,444
PROJECT OVERRUN/ (UNDERRUN):	\$ (772,617)	\$ 10,876,944	\$ (50,614,603)	\$ (40,510,276)
The percentage of actual work that has been completed at the end of the reporting period (not a % of funds expended)				86%
The estimated cost of the project at completion (which may even exceed the awarded amount)				\$ 345,159,696

Type of Expense & Funding Source	Budget (from Application)	Federal/ Local/ State (STIF only)	Total Expended to Date	Remaining Balance
Acquisitions	\$ 880,880			
		Local	\$ 377,164	
Phase III ROW in progress.				
DM River Levee Interior Drainage Phase I		State FMP	\$ 103,581	
DM River Levee Improvement Phase I		State FMP	\$ 181,796	\$ 350,000
Phase IV ROW in progress.				
DM River Levee Interior Drainage Phase II		State FMP	\$ 9,433	\$ -
TOTAL State FMP			\$ 294,810	\$ 350,000
TOTAL			\$ 671,974	\$ 208,906
Management Costs	\$ 9,041,877			
		Local	\$ 9,041,877	
TOTAL			\$ 9,041,877	\$ -
Construction:	\$ 266,700,642			
Phase I Construction Complete		CDBG	\$ 11,517,037	
		Army Corp of Engineers	\$ 13,108,000	
		Federal DOT	\$ 2,849,000	
		State DOT	\$ 726,071	
		I-JOBS	\$ 7,476,588	

		SRF - Clean Water	\$ 100,086,397	
		In-Kind Contribution	\$ 4,058,540	
		Local	\$ 38,529,067	
Phase II Construction Complete				
	Fourmile Sponsored Project	SRF - Clean Water	\$ 652,920	\$ -
Phase III Construction Complete				
	Red Bridge Re-Elevation	State FMP	\$ 2,291,932	\$ -
	Downtown Closures	State FMP	\$ 1,617,165	
	DM River Levee Interior Drainage Phase I	State FMP	\$ 9,114,629	\$ -
Phase IV Construction Complete				
	DM River Levee Interior Drainage Phase II	State FMP	\$ 8,333,372	
Phase III Construction in Progress:				
	DM River Levee Improvement Phase I	State FMP	\$ 8,498,049	\$ 17,462,003
	WRF Flood Improvements	State FMP	\$ 15,412,969	\$ 1,707,766
	WRA Ingersoll Run	SRF - Clean Water	\$ 1,066,137	\$ 22,193,001
Phase IV Construction in Progress:				
TOTAL State FMP				
			\$ 45,268,115	\$ 19,169,769
TOTAL			\$ 225,337,872	\$ 41,362,770
Design			\$ 35,346,277	
Phase I Design Complete				
		Local	\$ 15,898,402	\$ -
Phase II Design Complete				
		Local	\$ 1,557,985	\$ -
Phase III Design Complete				
	Red Bridge Re-Elevation	State FMP	\$ 179,486	\$ -
	Stantec Consultant Services - Hydraulic Modeling, Ext	State FMP	\$ 2,066,384	\$ -
	Des Moines River Upstream Mitigation Study	Local	\$ 450,263	\$ -
	Downtown Closures	State FMP	\$ 116,750	
Phase III Design in progress.				
	WRA Ingersoll Run	SRF - Clean Water	\$ 218,325	
	WRA Ingersoll Run	State FMP	\$ 808,924	\$ -
	WRF Flood Improvements	State FMP	\$ 2,368,105	
	WRF Effluent Pumping Improvements	State FMP	\$ 517,065	\$ 762,836
	DM River Levee Improvement Phase I	State FMP	\$ 5,985,917	\$ 1,338,394
	DM River Levee Interior Drainage Phase I	State FMP	\$ 1,939,583	\$ 191,859
Phase IV Design in progress.				
	DM River Levee Interior Drainage Phase II	State FMP	\$ 940,532	\$ 5,468
TOTAL State FMP			\$ 14,922,746	\$ 1,535,721
TOTAL			\$ 33,047,720	\$ 2,298,557
City Financing Interest:			\$ 29,115,510	
		NA	\$ -	
TOTAL			\$ -	\$ 29,115,510

WRA Financing Interest:	\$ 4,074,510			
		NA	\$ -	
TOTAL			\$ -	\$ 4,074,510
Total Project Budget Summary	\$ 345,159,696		\$ 268,099,442	\$ 77,060,253

FUNDING SOURCE:	FEDERAL (from Application)	LOCAL (from Application)	STATE (from Application)	Total Expended to Date
CDBG	\$ 11,517,038			\$ 11,517,038
US Army Corp of Engineers	\$ 14,808,000			\$ 13,108,000
Federal DOT	\$ 2,849,000			\$ 2,849,000
Iowa DOT		\$ 726,071		\$ 726,071
I-Jobs		\$ 7,476,588		\$ 7,476,588
SRF- Clean Water	\$ 101,096,396			\$ 102,023,779
Local In-Kind Contribution		\$ 4,058,540		\$ 4,058,540
Local		\$ 54,977,814		\$ 65,854,758
Iowa Flood Mitigation Program			\$ 111,100,273	\$ 60,485,670
Total Project Funding Source	\$ 130,270,434	\$ 67,239,013	\$ 111,100,273	\$ 268,099,444

Indebtedness Incurred (Bonds, etc.)	Rate of Interest	Length of Term (start & end)	Costs of Issuance	Net Proceeds
	0.00%		\$ -	\$ -
	0.00%		\$ -	\$ -
	0.00%		\$ -	\$ -

NON-PUBLIC INVESTMENT - Entity	Total to Date
Various Entities within the City of Des Moines	\$ 30,281,706
	\$ -
	\$ -
Total Non-Public Investment	\$ 30,281,706

Project Status- entire project (Check One)	Description of significant activities this semi-annual term . Include comparison of actual accomplishments to the objectives identified in your application. Attach pictures and a narrative. Status changes or delays, please explain reason.	
	<input type="checkbox"/>	On Schedule
	<input checked="" type="checkbox"/>	Delayed
	<input type="checkbox"/>	Canceled
	<input type="checkbox"/>	Completed
<input type="checkbox"/>	Suspended	Please see attached.

Application Work Schedule (Milestones)			Milestone Status
#	Description:	Submitted Completion Date:	Actual Completion Date:
1	Phase I	12/31/2015	7/1/2016
2	Phase 2	12/31/2016	4/17/2018
3	Phase 3	12/31/2019	
4	Phase 4	12/31/2024	
5			
6			
7			
8			
9			
10			
11			
12			
13			
14			

Person Completing this Report: Calvin Miller, Engineering Administrative Manager

Date: 11/15/2022

I, the undersigned, hereby certify that the above information is accurate and true, and in accordance with the approved project plan and state and federal regulations and policies governing this award.


Signature on file


Signature of Authorized Representative or Governmental Entity

Calvin Miller, Engineering Administrative Manager

Name of Authorized Representative or Governmental Entity

Instructions to complete this form

Areas shaded  are to be completed by State HSEMD Personnel.

Areas shaded  are to be completed by the governmental entity or authorized administrator.

WRF Flood Improvements

The WRF Flood Improvements Project consists of 1) construction of a flood wall around the existing main pump station at WRF to protect against flooding caused by stormwater and/or breach of the levee. The existing electrical power transformer for the main pump station will be replaced and raised to a higher elevation to protect against potential flooding; 2) construction of a new building to house new electrical switch gear and emergency power generators for the treatment plant to permit treatment operations to continue in the event of a power outage. The floor elevation of the new building will be elevated several feet to provide additional flood protection. Construction commenced in October 2020 and is expected to be complete in the Spring 2023.



Figure 1: New Standby Power and Electrical Service Building



Figure 2: Elevated Electrical Transformers the Serve Main Pump Building



Figure 3: Flood Wall and Flood Gate Complete on East Side of Main Pump Building



Figure 4: Flood Wall Under Construction on West Side of Main Pump Building

WRA Ingersoll Run Outlet

The WRA Ingersoll Run Outlet project includes approximately 10,000 linear feet of 60-inch to 66-inch diameter combined sewer conduit for conveying floodwater from the downtown Des Moines area to the WRA Combined Sewer Solids Separation Facility located at the Des Moines Metropolitan Wastewater Reclamation Facility. The project has separated into three contracts and Segment 1 was recently awarded to a contractor in the amount of \$17,804,480.00; Segment 2 is currently under design and is estimated to be 60% complete; and Segment 3 is currently under construction and is anticipated to be complete in Summer 2023. The Segment 3 contract value is \$4,388,521.00.

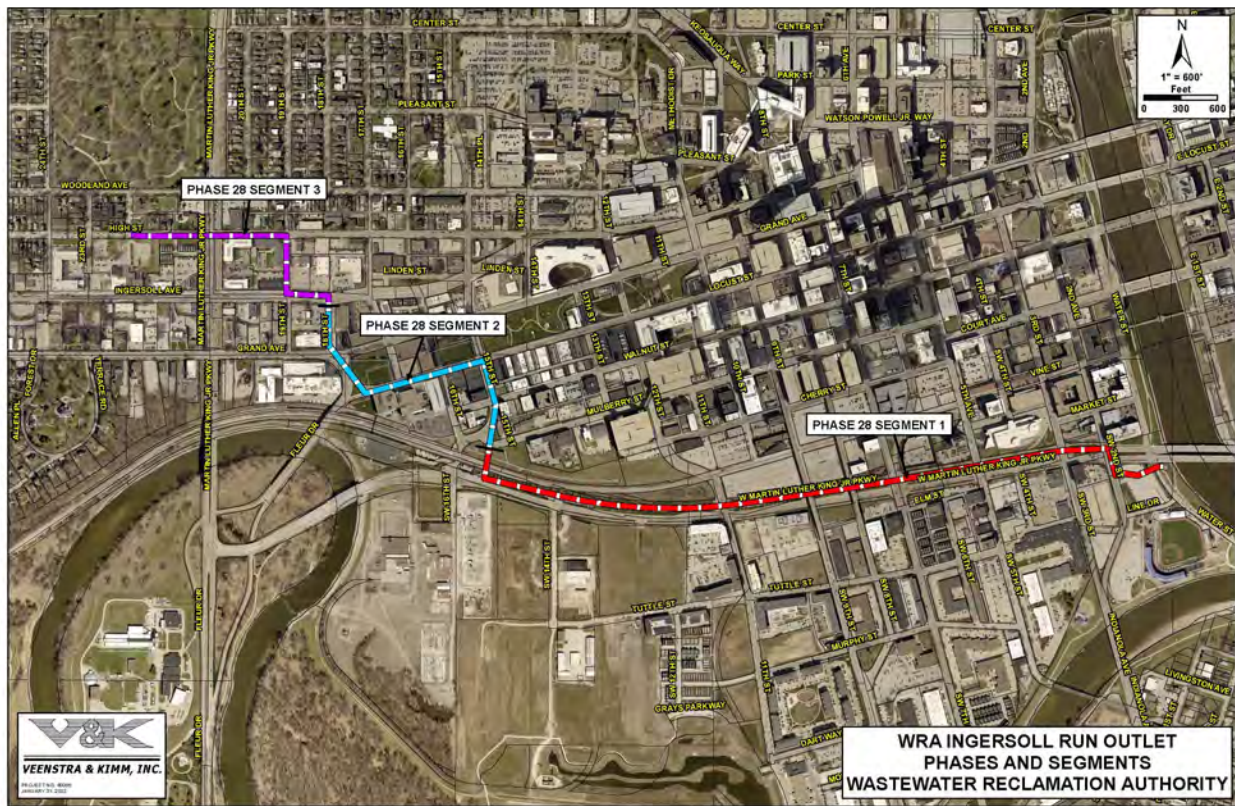


Figure 5: Overall Map of WRA Ingersoll Run Outlet Sewer



Figure 6: Segment 3 Pipe Boring Operation

WRF Effluent Pumping Improvements

The WRF Effluent Pumping Improvements includes the implementation of a project plan to increase secondary treatment hydraulic capacity. Effluent pumps will mitigate the limited existing gravity head through the secondary treatment system to the final effluent discharge. The project will include the following major components: install effluent pumping with a minimum firm capacity of 200 million gallons per day with the potential for future expansion capacity. The design is currently at a 30% design and is progressing.

Des Moines Levee Alterations - Phase A

This project includes earthen levee raise, earthwork, excavation, Portland Cement Concrete (PCC) cast-in-place T-wall, cast-in-place floodwall raises, gatewell structural modifications, stoplog closures, revetment, Portland Cement Concrete (PCC) pavements, Hot Mix Asphalt (HMA) pavement, sanitary sewer abandonment, erosion control, seeding of disturbed areas, other incidental items and miscellaneous associated work including cleanup, with improvements located along the Des Moines River from the confluence to Center Street in Des Moines, Iowa. Design has been submitted to the US Army Corps of Engineers for Section 408 Approval. The project started construction on September 14, 2020 and is approximately 99% complete with the final out process underway. The site has reached 70% growth density for final stabilization.

Des Moines Levee Alterations - Phase B

This includes earthen levee raise and widening, earthwork, clearing, excavation, cast-in-place floodwall, cast-in-place floodwall raises, cast-in-place retaining wall, new gatewells, gatewell structural modifications, stoplog structure and stoplogs, revetment, manholes, storm sewer pipe and repair, articulated concrete block, utility abandonment and removal, pavement removal, Portland Cement Concrete (PCC) pavement, Hot Mix Asphalt (HMA) pavement, lighting removal and installation, fencing, erosion control, seeding, other incidental items and miscellaneous associated work including cleanup, with improvements located along the Raccoon River from the confluence of the Des Moines River to Martin Luther King Jr. Parkway, in Des Moines, Iowa. Peterson Contractors (PCI) was awarded the contract on April 18, 2022 in the amount of \$12,732,340.85.

The first phase of the project, from SW 3rd Street to SW 7th Street on both sides of the Raccoon River has an intermediate completion date of October 14, 2022. The trail closures for the Meredith Trail have been in place since mid-May. Floodwall, finish grading, trail paving, and restoration are nearing final completion.

The second phase is located on the north side of the river from SW 7th Street to the Coleman Bridge. Rough grading and riprap work nearing 75% completion.

Overall project is 50% complete and ahead of schedule.



DSM Levee Alt Phase B, north side to SW 7th Street Bridge



DSM Levee Alt Phase B, SW 3rd Street - SW 7th Street, south side floodwall



DSM Levee Alt Phase B, Phase 2, north side

Des Moines Levee Alterations - Phase C

On February 8, 2022, bids were rejected due to being \$4 million over the City's estimate. The project will be rebid on November 22, 2022.